



GUIDING STATEMENTS

Mission

The UWC movement makes education a force to unite people, nations and cultures for peace and a sustainable future.

Educational goal

The UWCSEA goal is to educate individuals to embrace challenge and take responsibility for shaping a better world.

Ambition

UWCSEA will be a leader in international education. We will have a worldwide reputation for providing a challenging, holistic, values-based education with an emphasis upon academic achievement, service to others, environmental stewardship, teamwork and leadership.

Values

The UWCSEA community expects members to:

- be honest and act with integrity
- avoid prejudice by developing views based on evidence, reasoning and understanding
- be compassionate and morally responsible
- embrace challenge in order to maximise their potential
- help other people
- take an interest in and enjoy friendship with people of all cultures and backgrounds
- minimise their harmful impact on the environment

Students, parents, staff, Board members and alumni are all considered to be part of the UWCSEA community.



Learning principles

Learning is a life-long process in which the learner engages with and reflects upon information and experiences to construct new or modify existing understanding as well as develop and apply skills and qualities

We know learning is effective when:

- **learners construct new understanding by activating prior knowledge and experiences**

Therefore, it is important that new learning is connected to what the learner has previously experienced or understood.

- **learners use timely and goal directed feedback**

Therefore, ongoing assessment should be regular and structured in a manner that allows for specific feedback to guide the learner in constructing meaning.

- **learners collaborate**

Therefore, learners must have opportunities to interact with others in a variety of situations and groupings.

- **learners are challenged**

Therefore, learners need to be challenged in developmentally appropriate ways.

- **learners feel secure and supported**

Therefore, learners need a safe and respectful learning environment.

- **learners construct meaning by seeing patterns and making connections**

Therefore, learning needs to be organised around core concepts.

- **learners actively process and reflect**

Therefore, time is required for learners to practise, reflect and consolidate learning.

- **learners apply metacognitive skills**

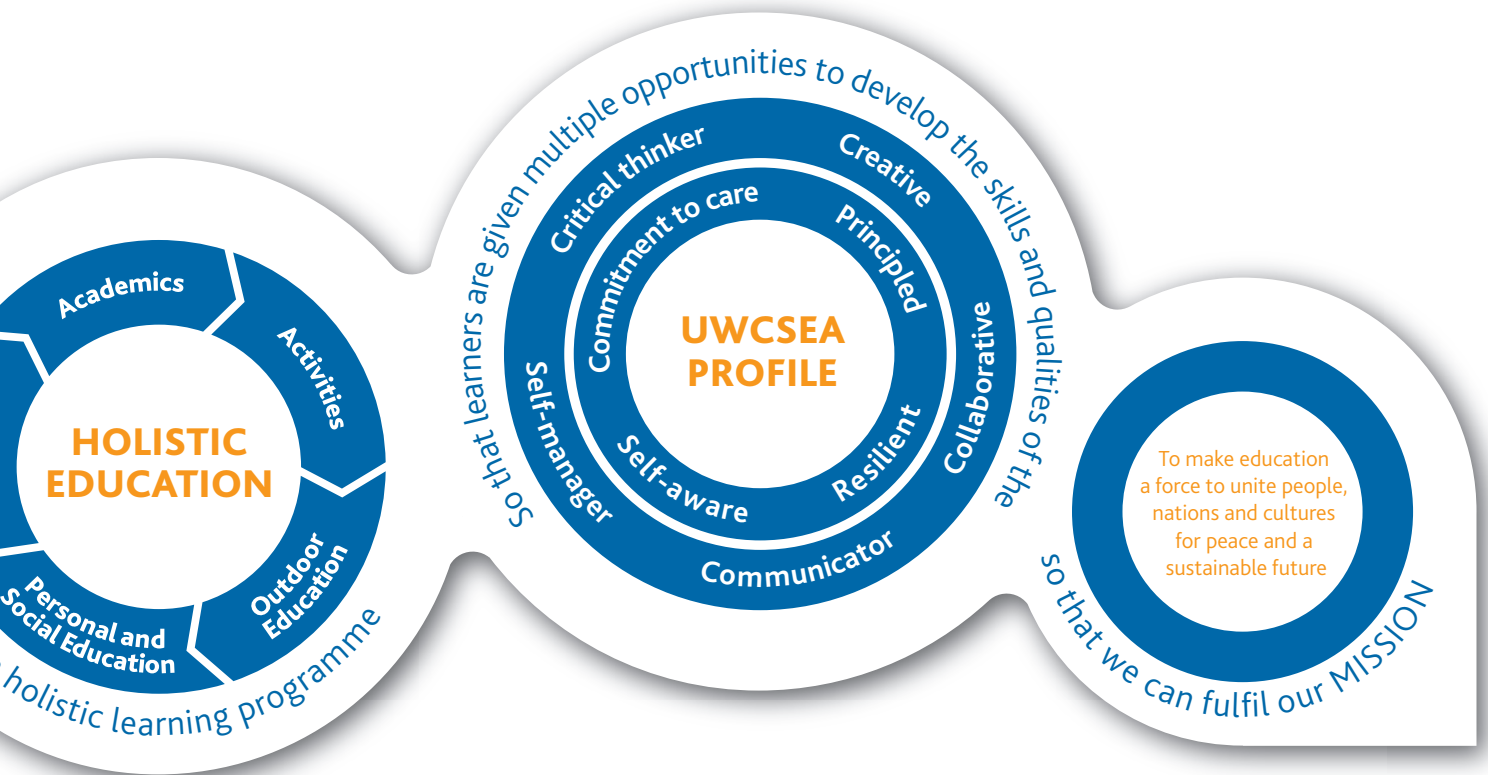
Therefore, learners should develop an awareness of their own thinking processes to develop intellectual habits.

- **learners understand the purpose of the learning**

Therefore, learning should occur in context with clear connections to real world.

- **learners have ownership of their learning**

Therefore, opportunities for self-directed learning are needed to sustain and motivate learning.



UWCSEA profile: qualities and skills

Our goal is to educate individuals to embrace challenge and take responsibility for shaping a better world. Our community achieves this goal by developing knowledge and understanding, qualities and skills through the five elements of the UWCSEA learning programme: academics, activities, outdoor education, personal and social education and service.

Qualities

Commitment to care

Initiate actions and make a commitment to shaping a better world.

Related concepts: stewardship, caring, empathy, compassion, open-minded, service, sustainability

Principled

Act with integrity and respect for self and the dignity of others.

Related concepts: integrity, honesty, responsibility, respect, fairness

Resilient

Anticipate, persevere and confront challenge.

Related concepts: optimism, confidence, courage, diligence, perseverance

Self-aware

Develop intellectual, physical, spiritual and emotional well-being.

Related concepts: self-discipline, self-esteem, self-confidence, reflection, balance, contentment

Skills

Critical thinker

Reason in an informed and fair-minded manner.

Related concepts: inquiry, questioning, connection, analysis, synthesis, evaluation, problem solving

Creative

Imagine and generate new possibilities or alternatives.

Related concepts: originality, imagination, curiosity, adaptability, connection, innovation, improvisation, risk-taking

Collaborative

Participate collaboratively in diverse settings.

Related concepts: cooperation, participation, leadership, flexibility, adaptability, responsibility, trust

Communicator

Communicate effectively according to audience and purpose.

Related concepts: communication, interpretation, perspective, intent

Self-manager

Take responsibility for directing one's learning.

Related concepts: metacognition, independence, diligence, organisation, responsibility



UWCSEA learning programme

The learning programme at UWCSEA consists of five interlinking elements: academics, activities, outdoor education, personal and social education and service. The elements combine to provide our students with a holistic, values-based education that develops them as individuals and as members of a global society.

Academics

A rigorous and broad academic programme focused on developing each student's joy in intellectual pursuit.

Activities

An extensive Activities programme, incorporating arts, sports, leadership and clubs, where students discover new interests, develop their strengths and follow their passions.

Outdoor education

Beginning in K1, experiential challenges build resilience,

collaboration and leadership, resulting in the most extensive Outdoor Education programme of any school in Singapore.

Personal and social education

A programme dedicated to supporting students in dealing with the personal and social challenges that all young people face.

Service

At the heart of our mission, the Service programme enables students to become aware, able and active contributors to both local and global communities.